

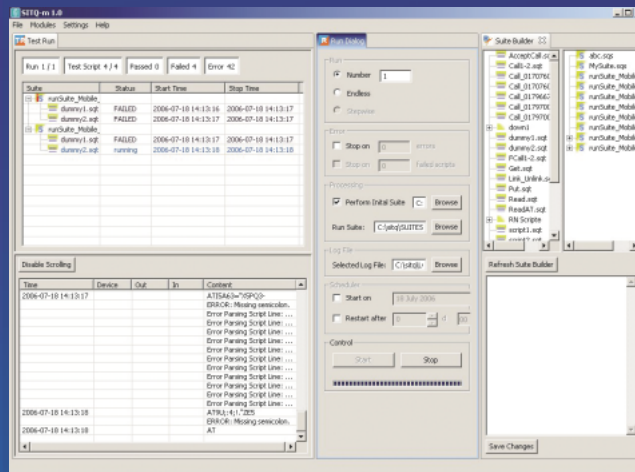
SITQ-m

System for improvement of technology and quality for manufacturers and mobile devices

www.sitqsystems.com

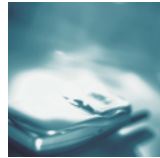
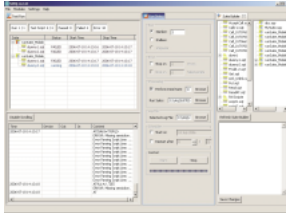


SITQ-m is a testing system based on the SITQ platform for manufacturers of mobile radio devices and devices with mobile radio components. SITQ-m can be used both in live network and in the lab to perform a wide variety of testing scenarios and easily automate test series, from simple test cases to complex processes. The instruction set enables simulation of both typical user behaviour and various atypical behaviour for the purpose of conducting function, stability and stress tests.



SITQ-m

System for improvement of technology and quality for manufacturers and mobile devices



SITQ-m enables automated running of test scripts, communication with connected devices via serial ports, USB, Ethernet or GPIB interfaces (additional interfaces must be obtained separately), automated test evaluation and log file generation.

The SITQ-m surface allows you to work intuitively and efficiently. Orientation time is very low. Helpful displays allow you to maintain a constant overview with respect to current test runs, interim results and unexpected events.

SITQ-m enables automated execution of a large number of user-typical processes, such as telephone calls, SMS transmissions, sending and receiving MMS messages, circuit switched and packet switched data transfers, GPRS, EGPRS or UMTS, games and much more.

Various expansion modules make SITQ-m into an even more powerful testing tool. Customer-specific links to proprietary APIs, database systems and error and version management systems have been taken into account in the system's design and can therefore be realized within a very short period of time.

SITQ-m can be used productively both for stationary tests and field tests.

Main features

- Control of various mobile devices
- Support of GSM, GPRS, EGPRS, 3G and HSDPA
- Randomizer module enables randomly generated sequences
- Statistics module for a large numbers of statistic evaluations
- Profile module to simulate the behaviour of various IP-Based applications
- Voice module to test acoustic transmission
- Message module to generate automatically and test EMS
- Record module, to record user entries via Man Machine Interface
- Remote module for full control of multiple SITQ-m test sets

Technical requirements

- Standard PC or notebook
- Processor: Intel or AMD platform
- RAM: >512 MB
- HD: >125 MB
- OS: Windows 2000, XP or Linux
- Interfaces: Serial, USB
- Optional: GPIB

Measurements

- Pass-Through Times
- FTP, HTTP, UDP
- Circuit switched and packet switched performance measurements
- SMS latency

SITQ-m is a part of SITQ test product family for testing numerous applications including drive and walk tests, roaming, benchmarking testing, field and lab tests.

Contact:

Uwe Hennrichs
Phone: +49.(0)30. 80 40 99-566
Email: sales@sitqsystems.com

SITQ Systems GmbH
Hauptstraße 65
D-12159 Berlin Germany
www.sitqsystems.com

WIRELESS TEST SYSTEMS