

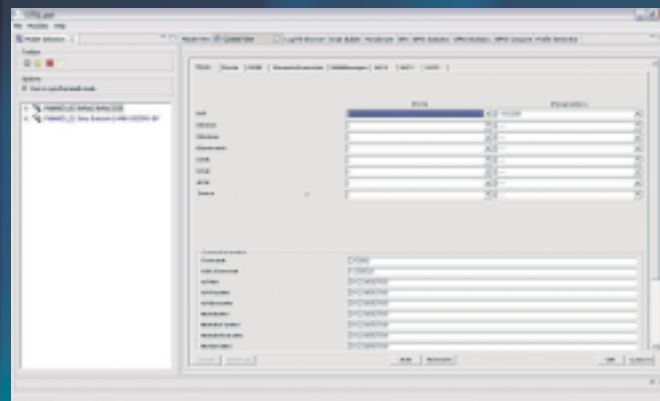
# SITQ - control

automate your GSM FTA lab

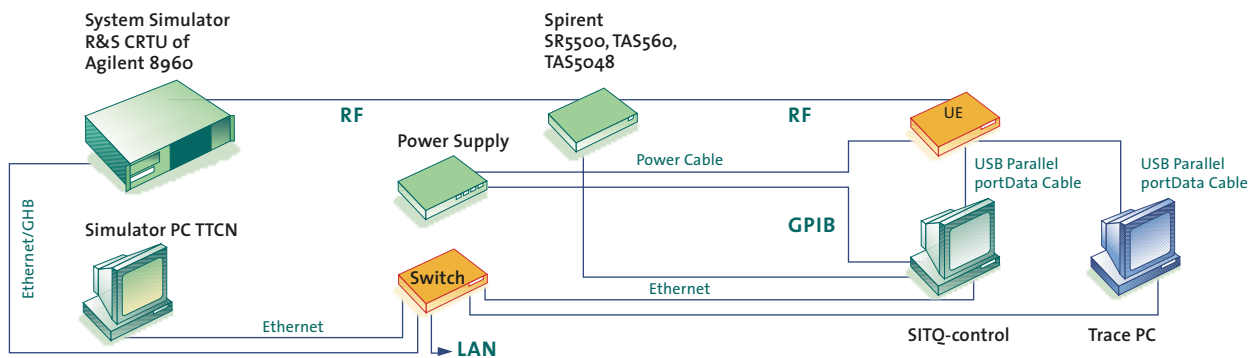
Today laboratory landscapes are no longer homogeneous, making it more difficult to integrate different devices into daily work routines.

SITQ-control helps by managing the widest range of laboratory equipment via a uniform user interface. SITQ-control permits automated testing of IUTs in complex laboratory environments. It is script-based and remote-controlled and functions via industrie standart interfaces.

Irrespective of the manufacturer, any piece of equipment can be integrated into all complex test scenarios.



# SITQ - control



www.sitqsystems.com

Each day test scenarios are becoming more complex, product cycles faster. Amidst this pressure, every hour in the lab is expensive.

Nearly all labs have equipment from different manufacturers that is hard to integrate simultaneously in test cases. Our SITQ-control solution can help by managing and controlling a wide range of laboratory equipment and outputting the results. Script-based and fully automatic, SITQ-control works without the time-consuming, error-prone need to rewire devices. SITQ-control optionally manages our SIM Card Switching Box, providing the system up to each 32 SIM cards. This enables comprehensive roaming or similar tests in different networks without exchanging SIM cards.

#### Advantages:

- Fully automated testing using all available laboratory equipment
- Up to 80% reduction in manpower costs per test suite through the high degree of automation
- Reproducibility of test cases and detected errors, documentation in an independent database
- Open, script-based system that operates in a manufacturer-independent fashion
- Improved utilization of available equipment through 24h and weekend test series

#### main Features

- Full integration into existing laboratory landscapes
- Open system interface: Ethernet, USB, Blue Tooth, Infrarot, Wlan, GPIB, R232
- Supported standards: GSM, GPRS, UMTS, EDGE, TETRA etc.
- Database export formats: CSV, XML, HTML, XLS, etc.

#### compatible hardware

- Rohde & Schwarz
- Anritsu
- HP
- Tektronix
- Spirent
- Agilent
- Fluke
- Testo
- and more



#### Contact:

Uwe Hennrichs  
Phone: +49.(0)30. 80 40 99-566  
Email: sales@sitqsystems.com

SITQ Systems GmbH  
Hauptstraße 65  
D-12159 Berlin Germany  
www.sitqsystems.com