

## SITQ - control

# TETRA

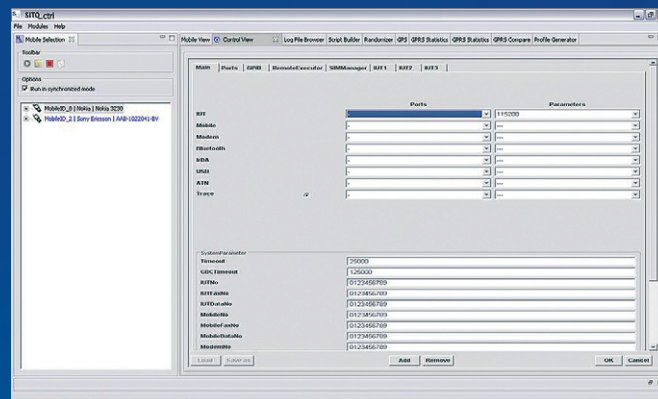
TETRA Test Lab Automation

www.sitqsystems.com

Today laboratory landscapes are no longer homogeneous, making it more difficult to integrate different devices into daily work routines.

SITQ-control helps by managing the widest range of laboratory equipment via a uniform user interface. SITQ-control permits automated testing of IUTs in complex laboratory environments. It is script-based and remote-controlled and functions via industrie standart interfaces.

Irrespective of the manufacturer, any piece of equipment can be integrated into all complex test scenarios.



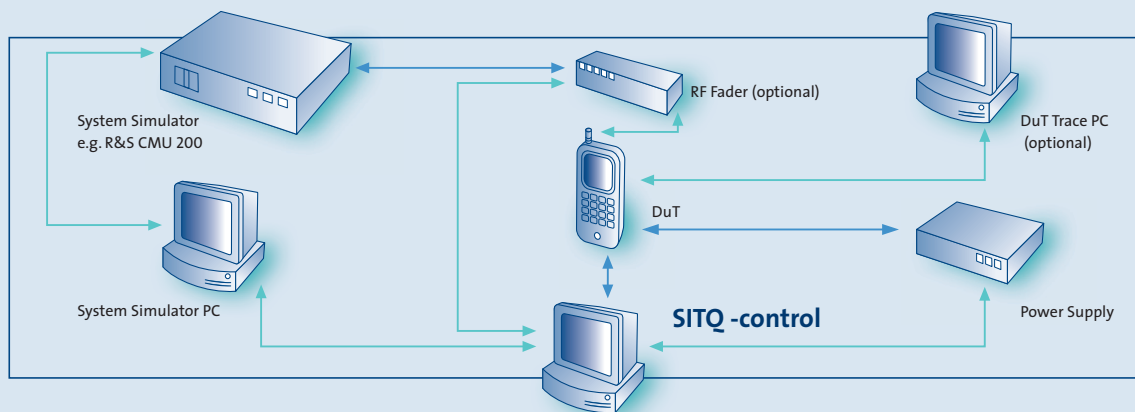
# SITQ - control

## TETRA Test Lab Automation

# TETRA

### Overview

The Lab Automation System use standard SITQ products in order to implement a full automation of TETRA test laboratories.



### SITQ Products Used

SITQ-control is designed to automate test labs. It's a test script based system; standard test sets are available; additional tests can be added by customer or SITQ. It connects user equipment (DuT) normally via PEI-Command.

SITQ Device on/off Switch (not shown in the picture above) is designed to implement test setups with the necessity for electromechanical power on/off of DuT controlled via PEI commands.

SITQ a (not shown in the picture above) is designed to implement test setups with the necessity for using a robot and a camera in order to control the DuT.

SITQ SIM Switching Box (not shown in the picture above) is designed to switch physically between  $\leq$  four SIM cards and between  $\leq$  four DuT with one connection available at given time. A second version with  $\leq$  24 SIM cards and  $\leq$  6 DuT's is available as well (other combinations on request).

### Test Application

The test idea is to test customer Devices under Test (DuT) in dedicated labs.

SITQ-cntrl controls all operations of all connected test equipment (e.g. R&S ...). This will be done via remote control interfaces of the lab equipment (Ethernet, GPIB, private API's ...) or via a demon in the lab equipment PC which reads out the screen content and simulates needed keyboard hits. SITQ-cntrl controls as well the DuT via a data connection (serial, USB, BlueTooth, IrDA ...).

The SIM Switching Box can be used to switch between different SIM cards (e.g.different Test SIM's). The DuT can be optionally switched on and off by using SITQ Device on/off Switch. This is necessary if no other electrical means inside the DuT is available. As a result the customer can run test suite without human being operators.